

HOME THEATER PC CHASSIS

Model: HTPC 500 BA & SA

Color: Black & Silver

Quick Installation Guide

(U.S. & Canada Only)
Version 1.0

DISCLAIMER

No warranty or representation, either expressed or implied, is made with respect to the content of this documentation, its quality, performance, merchantability, or fitness for a particular purpose. Information presented in this documentation has been carefully checked for reliability; however, no responsibility is assumed for inaccuracies. The information contained in this documentation is subject to change without notice.
In no event will nMedia will be liable for direct, indirect, special, incidental, or consequential damages arising out of the use or inability to use this product or documentation, even if advised of the possibility of such damages.

TRADEMARKS

All trademarks used in this user guide are the property of their respective owners.

COPYRIGHT

© 2007 by NMEDIA SYSTEM, INC. All rights reserved. No part of this publication may be reproduced, transmitted, transcribed, stored in a retrieval system, or translated into any language in any form by any means without the written permission of NMEDIA SYSTEM, INC.

TECHNICAL SUPPORT

If a problem arises with your system and no solution can be obtained from this user guide, please contact your place of purchase or local dealer.

REVISION HISTORY

V 1.0 January, 2007

Note:

This user guide is designed to provide the user a quick reference for chassis setup. We assume you need the information regarding how to assemble the system, such as Motherboard, CPU, RAM Memory, Hard Drive, DVD ROM, Operating System..., etc. Based on this assumption, we make this user guide of quick installation guide. Please follow the description step by step to install the components. If you have any question in assembling the system, please refer your questions to the appropriate Technical Support of the component vendors.

Overview

Standard Components Equipped

- HTPC 500 chassis
- 20 x 2 MCE VFD Module w/ internal USB connection
- 2 x 60mm silent case fan; 1 x 80mm silent HDD fan
- S/PDIF output jack – onboard S/PDIF output port required
- Microsoft MCE IR receive **rack** - receiver not included
- Front connectors - onboard connectors required
 - USB 2.0 x 2; IEEE 1394 x 1
- Tight cables, screws, installation guide

Other Components

- ATX or Micro ATX Motherboard (Intel ViiV or AMD Live ready is **recommended**)



- CPU / Cooler (nMEDIAPC ICETANK or ICECONE is **recommended**)



- Hard Drive (SATA is **recommended**)
- RAM Memory
- Optical Drive (DVD Burner is **recommended**)
- Operating System (Microsoft MCE 2005 or Vista with MCE is **recommended**)
- Mouse & Keyboard (MCE 2005 or Vista with MCE remote, nMEDIAPC 2.4GHz RF wireless keyboard is **recommended**)



For upgrades:

- Sound Card
- Video Graphic Card (Fanless model is **recommended**)
- TV Tuner Card (MCE certified is **recommended**)

Installation Flowchart (Basic Procedures)

- Open box → Read installation guides → Remove top cover → Remove optical drive bracket → Remove PSU bracket → Remove HDD bracket → Install motherboard → Install internal IR receivers (if required) → Install CPU & Cooler → Install DIMM memory module → Install hard drive → Install power supply → Connect cables → Install optical drive → Replace cover

Installation Tools

Screw driver / Screws / Tight cables / Installation guides

Installation Tips:

1. If you are using the ICETANK or ICECONE CPU cooler, we recommend that you install the CPU and Cooler onto the motherboard before you slot it in the case. This will smooth the cooler installation with more space “outside” of the case.
2. Some DVD trays cover need to be removed in order to eject the tray smoothly without blocking by the DVD flip down door.
3. When installing the DVD drive, adjust the DVD drive appropriately until your case eject button can eject the tray smoothly, then mark down the position, and secure the DVD to the DVD rack with screws.
4. If you are planning to convert the MCE external receiver, do it before motherboard installation, otherwise, you may need to un-install everything in order to slot in the MCE receiver PCB board on the IR Rack.
5. Do not perform cable management until your system is fully configured. This will make the cable management a better smooth procedure.
6. Do not install optional upgrade video card / TV tuner card / Sound card at once. Use everything on board (video & sound) to configure system and install operation system. After then, install the upgrades one by one and restart the system on every step to ensure component compatibility and save times of troubleshooting when issue arises.

Step 1: Install Power Supply

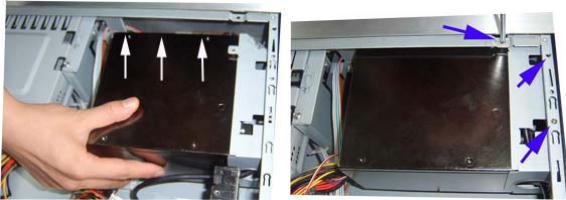
1. Take off the Power Supply Rack



2. Install Power Supply & Connect Extension Power Cord

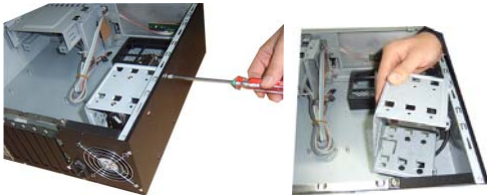


- ## 3. Re-install rack to the chassis
- a. Push the power supply toward the front
 - b. Secure the 3 screws to secure the rack

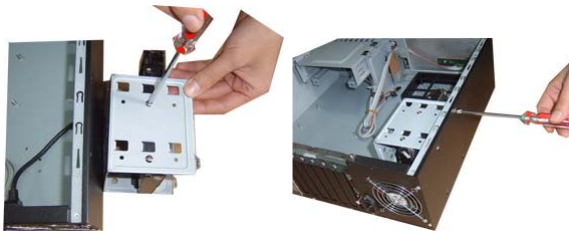


Step 2: Install Hard Drive

- ### 1. Take off the HDD rack



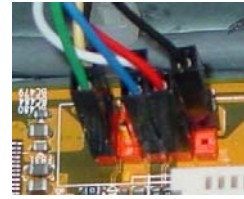
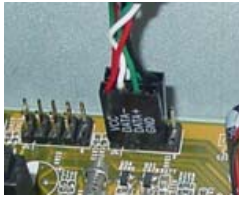
- ### 2. Install Hard Drive



Step 3: Install Motherboard



Step 4: Connect Cables



Step 1: Connect Front USB 2.0, IEEE 1394 and Audio Connectors

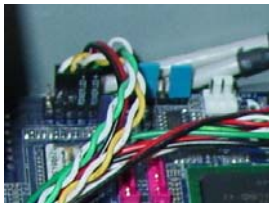
See motherboard user manual for location and connection.

USB Port Color Codes:

Red = +5V
White = Data- (-D)
Green = Data+ (+D)
Black = Ground (GND)

IEEE 1394 Color Codes

Black -- Ground (GND)
Red -- +5V
Blue -- +TPB (TPB+)
White -- -TPB (TPB-)
Yellow -- +TPA (TPA+)
Green -- -TPA (TPA-)



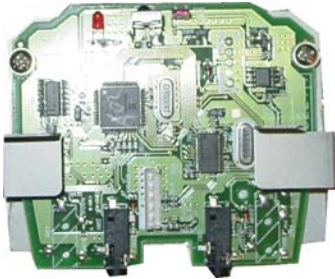
Connect front Power/Reset/HDD switch connectors and Power Button LED light power cord

PWR SW / Reset SW / HDD

See motherboard user guide for connection



Organize the cables with provided tied cables.
See picture for reference.



Make sure no metal touching to avoid shortage

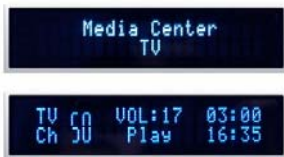


Two screws are provided for securing other type IR PCB board with different screw holes.

Install Internal MCE Receiver

User can convert the external MCE receiver dongle internally by installing the receiver PCB on the MCE Receiver IR Rack that comes with the case. (Right below the optical drive rack)

- o Unscrew the 2 thumb screws and take out the IR receiver rack
- o Take out the MCE external receiver plastic enclosure by removing the two front rubber legs
- o Carefully install the MCE receiver module to the rack (**check rack to ensure no metal touching to avoid circuit shortage**)
- o Secure the MCE receiver rack back to the case, make sure the IR sensor head is facing accurately behind the plastic window
- o Connect the receiver via the equipped USB converter cable to the onboard USB port
- o Route the MCE IR Blaster sensor heads to the back of the case via the S/PDIF PCI slot hole and stick them to the TV set top box's IR point.



VFD

Connect the internal USB port from the VFD to the onboard USB port

For more detail instruction or driver update, please visit:

http://www.nmediapc.com/support_280VFD.htm

Step 5: Install Optical Drive



Step 6: Other Component Installation

For other components, including hard drive connection; RAM; CPU & cooler; optical drive, operating system, video card, sound card, TV tuner card and power supply connection etc., follow the user manual and motherboard manual instruction.

S/PDIF Output Connection

It is a standard S/PDIF output jack. Connect the header to the onboard S/PDIF output port, and connect the jack to your receiver via a coaxial digital cable. (remember to change your Audio setting to pure digital output) See below color codes when connecting the cable to the board:

- o White – “Data” or “S/PDIF out”

- Black – Ground

Reference

Chassis Support

support@nmediapc.com

Safety Instructions

Always read the step by step installation instruction to protect your components

Keep the user guide for future reference

Keep away from humidity, liquid and temperature above 60c (140 f) environment

Make sure the voltage of the power supply and adjust properly 110/230V

Always unplug the power cord before inserting any add-on devices

Get the system checked by service personnel if below happens:

- The power cable is damage
- Liquid has penetrated into the system
- Dropped and damaged

RMA Return Policy

- All accessories and cables must be returned as they were shipped
- Carefully re-packaging is needed to avoid shipping damages
- All warranties are subject to properly uses. Any human power damages return may be rejected according to warranty terms and conditions

Copyright © 2007 NMEDIA SYSTEM, INC. All Right Reserved.