

HOME THEATER PC CHASSIS

Model: HTPC 1080i

Color: White

Quick Installation Guide

(U.S. & Canada Only)
Version 1.0

DISCLAIMER

No warranty or representation, either expressed or implied, is made with respect to the content of this documentation, its quality, performance, merchantability, or fitness for a particular purpose. Information presented in this documentation has been carefully checked for reliability; however, no responsibility is assumed for inaccuracies. The information contained in this documentation is subject to change without notice.

In no event will nMedia will be liable for direct, indirect, special, incidental, or consequential damages arising out of the use or inability to use this product or documentation, even if advised of the possibility of such damages.

TRADEMARKS

All trademarks used in this user guide are the property of their respective owners.

COPYRIGHT

© 2004-2011 by NMEDIA SYSTEM, INC. All rights reserved. No part of this publication may be reproduced, transmitted, transcribed, stored in a retrieval system, or translated into any language in any form by any means without the written permission of NMEDIA SYSTEM, INC.

TECHNICAL SUPPORT

If a problem arises with your system and no solution can be obtained from this user guide, please contact your place of purchase or local dealer.

REVISION HISTORY

V 1.0 May, 2010

Note:

This user guide is designed to provide the user a quick reference for chassis setup. We assume you need the information regarding how to assemble the system, such as Motherboard, CPU, RAM Memory, Hard Drive, DVD ROM, Operating System..., etc. Based on this assumption, we make this user guide of quick installation guide. Please follow the description step by step to install the components. If you have any question in assembling the system, please refer your questions to the appropriate Technical Support of the component vendors.

Overview

Standard Components Equipped

- HTPC 1080i chassis
 - iPod/iPhone Base Station with Audio Out Connector
- Tight cables, screws, installation guide

Other Suggested Components

- Window 7 / Vista Home Premium or Ultimate Operation System
- iTX Motherboard with Atom Processor
- 1080IP Modulated Power Supply (Support System Max 60W)
- CPU (Atom recommended due to limit on PSU)
- Hard Drive (2.5" HDD x 1)
- RAM Memory
- Optical Drive (Slim Drive)
- Keyboard with trackball (nMEDIAPC 2.4GHz RF wireless keyboard is **recommended**)



Installation Flowchart (Basic Procedures)

- Open box → Remove bottom cover → Read installation guides → Assemble Power Supply (1080IP) →
- Install Power In Cable that connects the Power Adaptor and PSU Module (If you don't have built in
- onboard PSU) → Install I/O Plate → Install motherboard → Install Power Supply → Install memory / CPU
- → Connect cables → Install 2.5" HDD → Install Connect HDD cables → Re-install bottom cover → Install
- case feet → Install Slim drive

Installation Tools

Screw driver / Screws / Tight cables / Installation guides

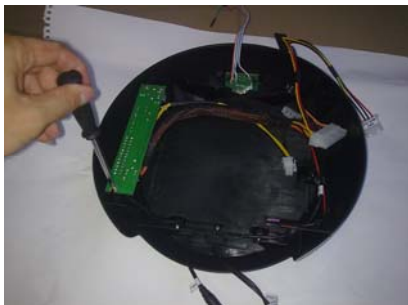
Step 1: Remove bottom cover and bring out PSU

1. Connect the PSU cables.
 - a. 24 Pins Head to the PSU board
 - b. Connect the "Power Board" label to the PSU Board
 - c. If you are not using a built in Power motherboard, i.e. Zotek, you must install the Power In cable that connects to the power adaptor and the other end to the power Module. Otherwise, **you will need to un-install the motherboard** if you miss this step.

Note: The header with the 12V (4 pins) connector goes to the power module, otherwise, your HDD SATA Power Cable will be short to connect to the HDD



2. Install the modulated 1080IP PSU board to the case left side and secure it with 2 screws.



Step 2: Install Motherboard and Connect Cables

1. Slide in the I/O Board
2. Install motherboard
3. Install Memory; CPU (if needed)
4. Connect 24 pins cable and USB cable to onboard port
5. Connect DVD ROM Power cord to PSU DVD ROM port



Step 3: Install Hard Drive and Optical Drive

1. Install HDD on the bottom cover
2. Secure the screws from the other side of the metal plate
3. Reverse the case, and slide in the Optical Slim Drive
4. Secure the driver with two screws on the side
5. Connect all Power and Data Cables



Step 4: Manage Cable Connection and Install Case Feet

1. Organize the cables with tie before connecting the HDD data and Power cable
2. Re-install the bottom cover
3. Push the case feet
4. Connect Power Adaptor



Step 5: IPOD/iPhone Base

1. When IPOD/iPHONE is plug in the base, USB charging is auto on
2. To use the Audio Out to a receiver/AMP, a RCA audio cable is needed to connect the Audio Out to your receiver or speaker or sound card Audio In when iPod/iPhone is put on the dock station. Video Out IS NOT supported. Media data can still be played in USB transfer.

Other Component Installation

For other components, including hard drive connection; RAM; CPU & cooler; optical drive, operating system etc., follow the user manuals and motherboard manual instruction.

Specifications

Model	HTPC 1080i
Color	White
Dimension	Case: 10.6"(W) x 3.8"(H w/ feet) x 10.6"(D)
Motherboard	Support Mini iTX (Intel ATOM recommended)
Power Supply	nMedia 1080IP (not included)
Drive Bays	Internal 2.5" Bay x 1 Internal Slim Optical Drive x 1
Cooling	Fanless (25 ~ 90mm fan can be added if space allow)
Feature	Built in iPod/iPhone Base with Audio Out Connector

Reference

Visit our website for more detail installation in PDF format.

http://www.nmediapc.com/HTPC 1080i/Quick_Guide_1080i.pdf

Technical Support: support@nmediapc.com

Safety Instructions

- Always read the step by step installation instruction to protect your components
- Keep the user guide for future reference
- Keep away from humidity, liquid and temperature above 60c (140 f) environment
- Make sure the voltage of the power supply and adjust properly 110/230V
- Always unplug the power cord before inserting any add-on devices

Get the system checked by service personnel if below happens:

- The power cable is damage
- Liquid has penetrated into the system
- Dropped and damaged

RMA Return Policy

- All accessories and cables must be returned as they were shipped
- Carefully re-packaging is needed to avoid shipping damages
- All warranties are subject to properly uses. Any human power damages return may be rejected according to warranty terms and conditions